

Introduction

The AERO variant of the DELTA SUITE adds to its powerful GIS solution a moving map capability and fully integrated sensor management functionality.

It offers a feature-rich environment to manage airborne ISR sensor feeds and correlated moving map functionality displaying sensor point of interest, sensor footprint, sensor cross-cueing, etc, fusing sensor data with other tactical items such as tracks, target info, BFT & TACSIT.

Data link between various DELTA SUITE stations is ensured through compatible communication systems.

Finally, compliance with military and civilian operating standards and protocols guarantees increased interoperability with 3rd party systems.



Basic features

Persistent display of:

- | | |
|---|---|
| <ul style="list-style-type: none">• Coordinates display (MGRS, Lat/Lon...)• Altitude & Elevation (m & ft)• Graphical Scale (metric / Imperial)• Local / Universal time | <ul style="list-style-type: none">• Navigation tools: map dragging & panning, 3D view orientation, zoom in / zoom out, markers, GOTO, bookmarks...• Integrated GIS query tool• Azimuth and distance measurement tool• 2D/3D toggle |
|---|---|

Mapping module: GIS dataset integration and terrain analysis.

This mapping module implements the following tools:

- Drag & Drop import of the following GIS formats: GeoTIFF, JPEG 2000, ECW, DTED/DMED, Shapefile, KML/KMZ, NITF, S57, USRP, ASRP, Mr Sid
- Vector drawing tools
- Elevation profile
- 2D or 3D intervisibility tool

Non contractual document

IMPACT: Sole Proprietor Simplified Joint Stock Company under French Law, with a capital of EUR15,000 and with its Head Office located at 18 Rue Alain Savary 25000 Besancon, France, registered with R.C.S Besancon, France.

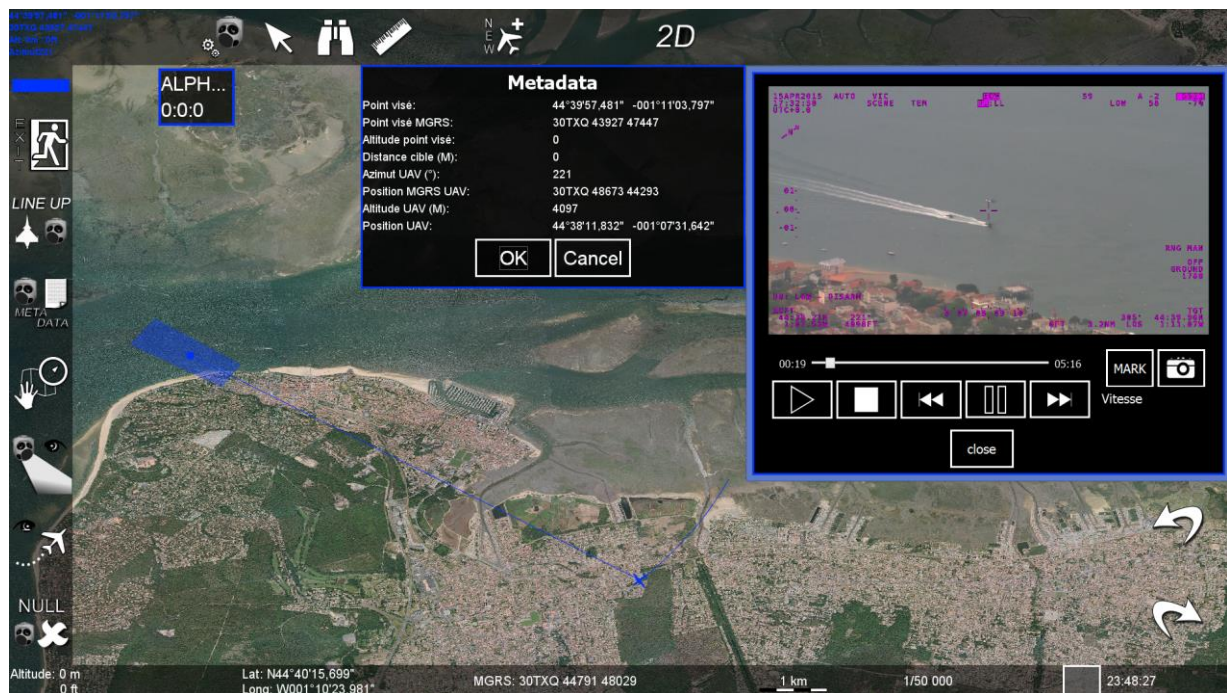
No Siret: 752 383 075 00021 - TVA Intracom: FR 74752383075 - Code NAF 5829C

Sensor feed management and Moving map

This feature-rich set of functionalities implements airborne sensors feed management (STANAG 4609, Wescam MX Series) and fuses sensor feeds and metadata with the moving map:

- Color-coded Rx signal strength indicator
- Moving map orientation selection (Sensor, True North, Custom...)
- Manual entry, Free text event logging
- Target data
- Sensor azimuth and elevation status display
- Slew mode (Sensor-dependent), brings Sensor point of interest on designated point
- Aircraft position, Aircraft track, target position, sensor footprint and sensor-to-target path
- AAR: Play, pause, stop, FFWD, RWD, Bookmarks, screen capture
- ATO/ACO display

Moving Map module:



Military and Civilian communication systems integration

Various communication systems are available on an optional basis. IMPACT will conduct a preliminary feasibility study based on customer requirements.

Standards and Protocols

The DELTA SUITE - AERO implements the STANAG 4609 norm.

Non contractual document

IMPACT: Sole Proprietor Simplified Joint Stock Company under French Law, with a capital of EUR15,000 and with its Head Office located at 18 Rue Alain Savary 25000 Besancon, France, registered with R.C.S Besancon, France.

No Siret: 752 383 075 00021 - TVA Intracom: FR 74752383075 - Code NAF 5829C