

## Introduction

The COMBATANT version of the DELTA SUITE software solution from IMPACT offers a wide range of functionalities designed for field operations.

It comprises a number of basic features and three dedicated modules: mapping, navigation and J-FIRE.

Seamless tactical data link and data exchange between DELTA SUITE equipped nodes is enabled through robust integration with a wide range of 3<sup>rd</sup> party sensors and communication equipment.

Finally, the DELTA SUITE - COMBATANT is fully compliant with a wide range of military and civilian data exchange protocols and standards, ensuring increased interoperability with a large number of 3<sup>rd</sup> party solutions.

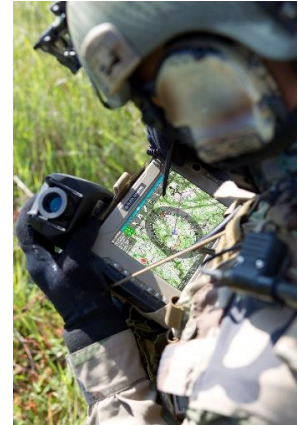


Photo SIRPA AIR –  
Monsieur Jean-Luc Brunet

## Basic features

Persistent display of:

- Coordinates display (MGRS, LAT/LON)
- Altitude & Elevation (m & ft)
- Graphical Scale (metric / imperial)
- Local / Universal Time
- Navigation tools: map drag & pan, 3D view orientation, Zoom In/Out, markers, GOTO, Bookmarks
- Integrated GIS query tool
- Azimuth & Distance measurement tool
- 2D / 3D toggle

## Mapping module: Geo-mapping data integration & management and terrain analysis tools

In addition to the generic functionalities described above:

- Drag-and-drop import of various geospatial data formats: GeoTIFF, JPEG 2000, ECW, DTED/DMED, Shapefile, KML/KMZ, NITF, S57, USRP, ASRP, Mr Sid
- Vector graphics overlays and drawing tools, elevation profile, 2D & 3D intervisibility

## Navigation module

This particular module enables real-time 2D or 3D navigation:

- NMEA 0183 GPS frame compliant
- GPS auto configuration and auto connect / disconnect
- Creation and management of waypoints, routes and POIs
- Various map orientations
- Navigation window with coordinates, elevation, current heading, ground speed, bearing, distance to WYPT, ETA display
- Color-coded signal strength indicator
- Real-time route logging
- Alerts (Danger areas, phase lines, route / corridor lateral egress alert)

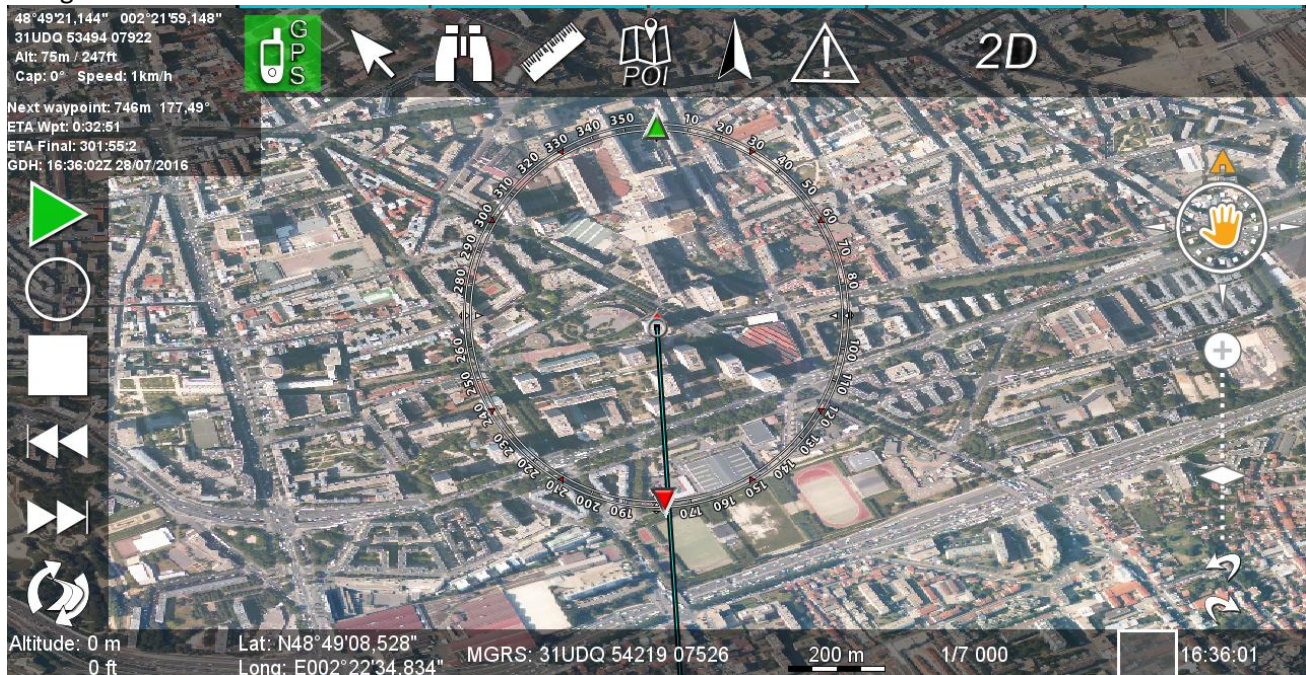
Non contractual document

IMPACT: Sole Proprietor Simplified Joint Stock Company under French Law, with a capital of EUR15,000 and with its Head Office located at LAB'O, 1 avenue du champ de Mars, 45100 Orléans, France.

No Siret: 752 383 075 - TVA Intracom: FR 74752383075 - Code NAF 5829C

[contact@sas-impact.fr](mailto:contact@sas-impact.fr)

### Navigation module:



### J-FIRE module

The J-FIRE module provides cutting-edge tools and features which enable the user to be fully integrated within a DACAS loop.

The J-FIRE module relies on superior BFT and TACSIT data fusion and real-time or near real-time positioning data exchange for increased SA.

The J-FIRE module also seamlessly integrates with a wide range of LRFs (Sophie MF & XF, JIM LR, Vector 21 / 4 / Nite, Moskito and PLRF25C).

The J-FIRE module allows the combatant to extract and display coordinates from a designated point on the map and transmit the targeting data using standardized message formats.

The J-FIRE module also offers messaging and graphical tools to create, update, send and receive TACSIT data.

### Situational Awareness (SA)

The DELTA SUITE - COMBATANT version provides superior Situational Awareness, based on real-time or near-real time data fusion of BFT and sensor downlink feed, as well as TACSIT data.

### Military and Civilian Sensors and Communication equipment

The DELTA SUITE - COMBATANT version is fully compatible with existing military sensors and devices: Pearl, Pilar, Blue Force Tracker (SILEX, Sysnav) etc.

Supported communication equipment include: ROVER 5i, Vortex, SIR, PRC117, PRC152 and Inmarsat.

### Standards et protocols

The DELTA SUITE - COMBATANT version is fully compliant with the following standards and protocols: KLV (STANAG 4609), VMF (STANAG 5519), TCP/IP, Liaison H (LH)...

Non contractual document

IMPACT: Sole Proprietor Simplified Joint Stock Company under French Law, with a capital of EUR15,000 and with its Head Office located at LAB'O, 1 avenue du champ de Mars, 45100 Orléans, France.

No Siret: 752 383 075 - TVA Intracom: FR 74752383075 - Code NAF 5829C

[contact@sas-impact.fr](mailto:contact@sas-impact.fr)