

## Introduction

The AERO variant of the DELTA SUITE adds to its powerful GIS solution a moving map capability and fully integrated sensor management functionality.

It offers a feature-rich environment to manage airborne ISR sensor feeds and correlated moving map functionality displaying sensor point of interest, sensor footprint, sensor cross-cueing, etc, fusing sensor data with other tactical items such as tracks, target info, BFT & TACSIT.

Data link between various DELTA SUITE stations is ensured through compatible communication systems.

Finally, compliance with military and civilian operating standards and protocols guarantees increased interoperability with 3<sup>rd</sup> party systems.



## Basic features

Persistent display of:

- Coordinates display (MGRS, Lat/Lon...)
- Altitude & Elevation (m & ft)
- Graphical Scale (metric / Imperial)
- Local / Universal time
- Navigation tools: map dragging & panning, 3D view orientation, zoom in / zoom out, markers, GOTO, bookmarks...
- Integrated GIS query tool
- Azimuth and distance measurement tool
- 2D/3D toggle

## Mapping module: GIS dataset integration and terrain analysis.

This mapping module implements the following tools:

- Drag & Drop import of the following GIS formats: GeoTIFF, JPEG 2000, ECW, DTED/DMED, Shapefile, KML/KMZ, NITF, S57, USRP, ASRP, Mr Sid
- Vector drawing tools
- Elevation profile
- 2D or 3D intervisibility tool

Non contractual document

IMPACT: Sole Proprietor Simplified Joint Stock Company under French Law, with a capital of EUR15,000 and with its Head Office located at 1 avenue du Champ de Mars, CS 30019, 45074 Orléans Cedex 2, France.

No Siret: 752 383 075 00039 - TVA Intracom: FR 74752383075 - Code NAF 5829C

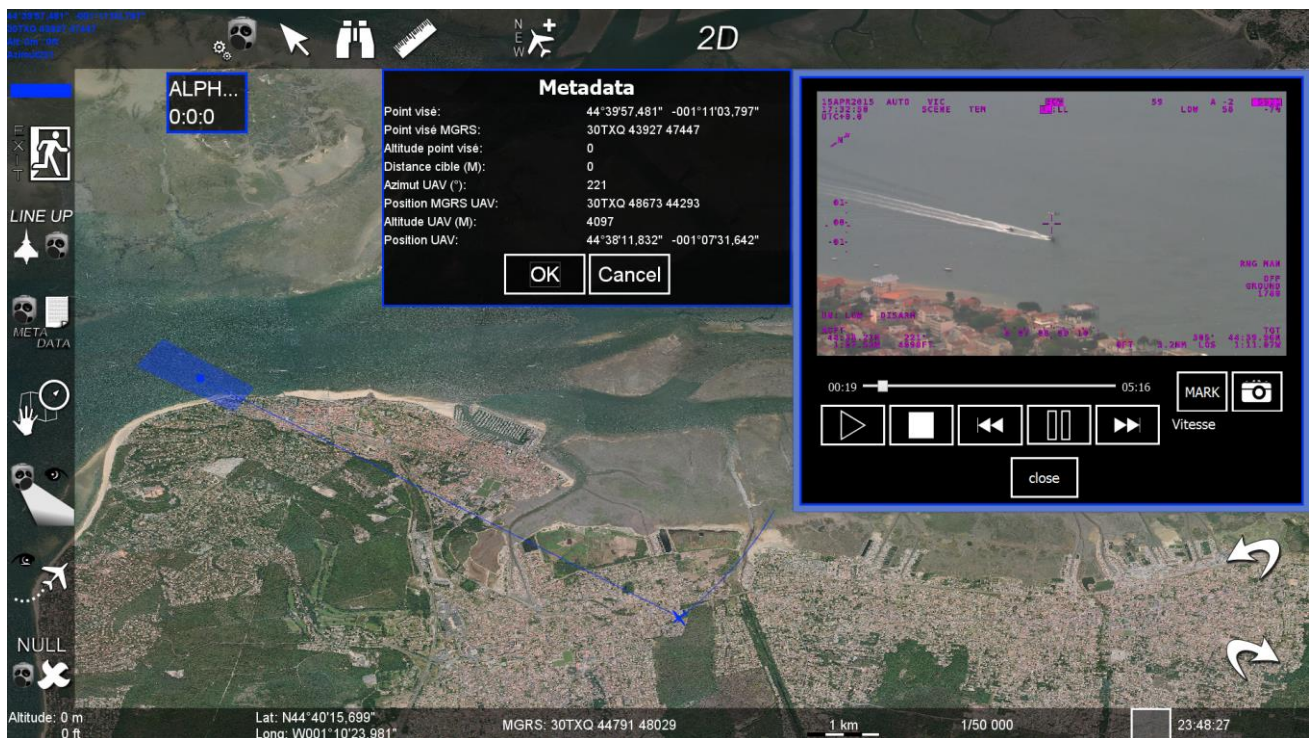
[contact@sas-impact.fr](mailto:contact@sas-impact.fr)

## Sensor feed management and Moving map

This feature-rich set of functionalities implements airborne sensors feed management (STANAG 4609, Wescam MX Series) and fuses sensor feeds and metadata with the moving map:

- Color-coded Rx signal strength indicator
- Moving map orientation selection (Sensor, True North, Custom...)
- Manual entry, Free text event logging
- Target data
- Sensor azimuth and elevation status display
- Slew mode (Sensor-dependent), brings Sensor point of interest on designated point
- Aircraft position, Aircraft track, target position, sensor footprint and sensor-to-target path
- AAR: Play, pause, stop, FFWD, RWD, Bookmarks, screen capture
- ATO/ACO display

Moving Map module:



## Military and Civilian communication systems integration

Various communication systems are available on an optional basis. IMPACT will conduct a preliminary feasibility study based on customer requirements.

## Standards and Protocols

The DELTA SUITE - AERO implements the STANAG 4609 norm.

Non contractual document

IMPACT: Sole Proprietor Simplified Joint Stock Company under French Law, with a capital of EUR15,000 and with its Head Office located at 1 avenue du Champ de Mars, CS 30019, 45074 Orléans Cedex 2, France.

No Siret: 752 383 075 00039 - TVA Intracom: FR 74752383075 - Code NAF 5829C

[contact@sas-impact.fr](mailto:contact@sas-impact.fr)